

ALL IN CONTROL

INTELLIGENT & POWERFUL

Built to ensure the LED bulbs to get a long-term and stable illumination



EMC

Effectively prevent electromagnetic interference to electronic equipment such as car radios

DRIVER LONGER

Intelligence temperature controller to ensure the LED headlight bulbs over 30,000+ hrs of brilliant continuous light.

CANBUS UPGRADED

Dedicated LED driver eliminates flicker and ensures full power with very turn-on.

TEMPERATURE CONTROL

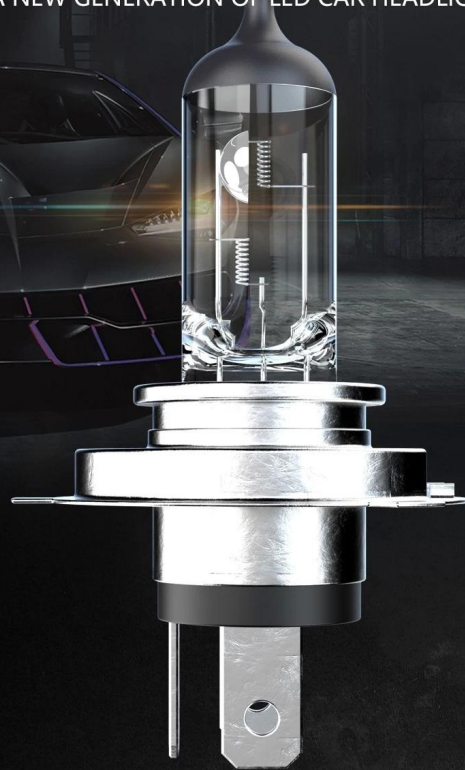
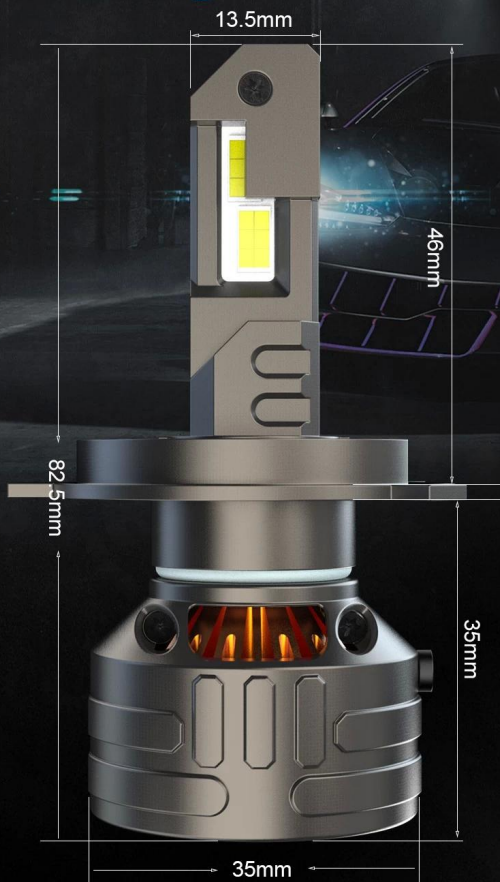
Intelligent temperature control chip, effectively prevent temperature overload, more stable performance



BEYOND

THE ORIGINAL HALOGEN LAMP

NEW UPGRADE OF A NEW GENERATION OF LED CAR HEADLIGHTS



12000LM

200M

0.01S

30,000+ HRS

LUMEN
DISTANCE
STARTUP SPEED
LIFESPAN

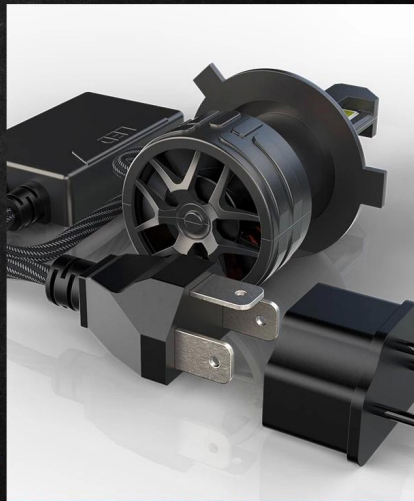
3200LM

100M

1S

3,000 HRS

5 IMPROVES ADVANTAGE



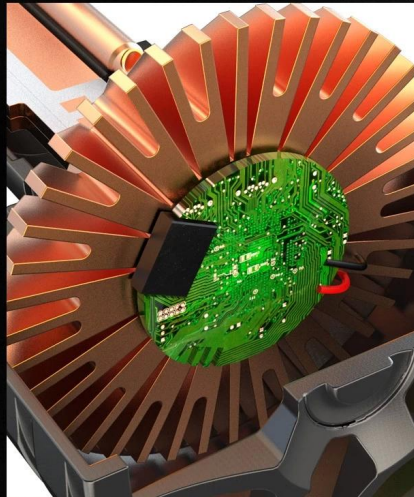
PLUG AND PALLY



UPGRADED LED CHIP



NOISELESS TURBOFAN



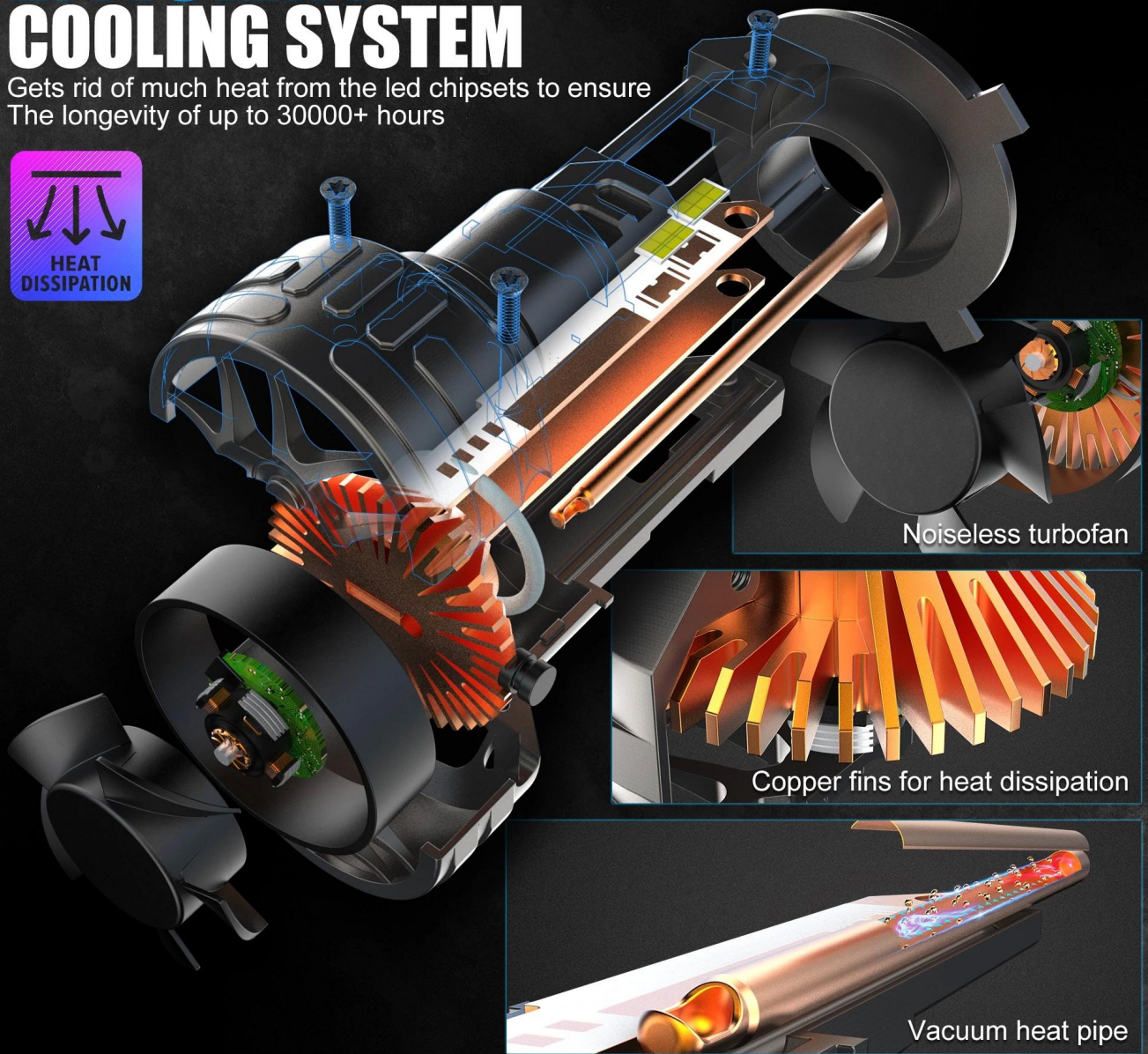
COPPER FINS FOR HEAT
DISSIPATION



VACUUM HEAT PIPE

EFFICIENT COOLING SYSTEM

Gets rid of much heat from the led chipsets to ensure
The longevity of up to 30000+ hours

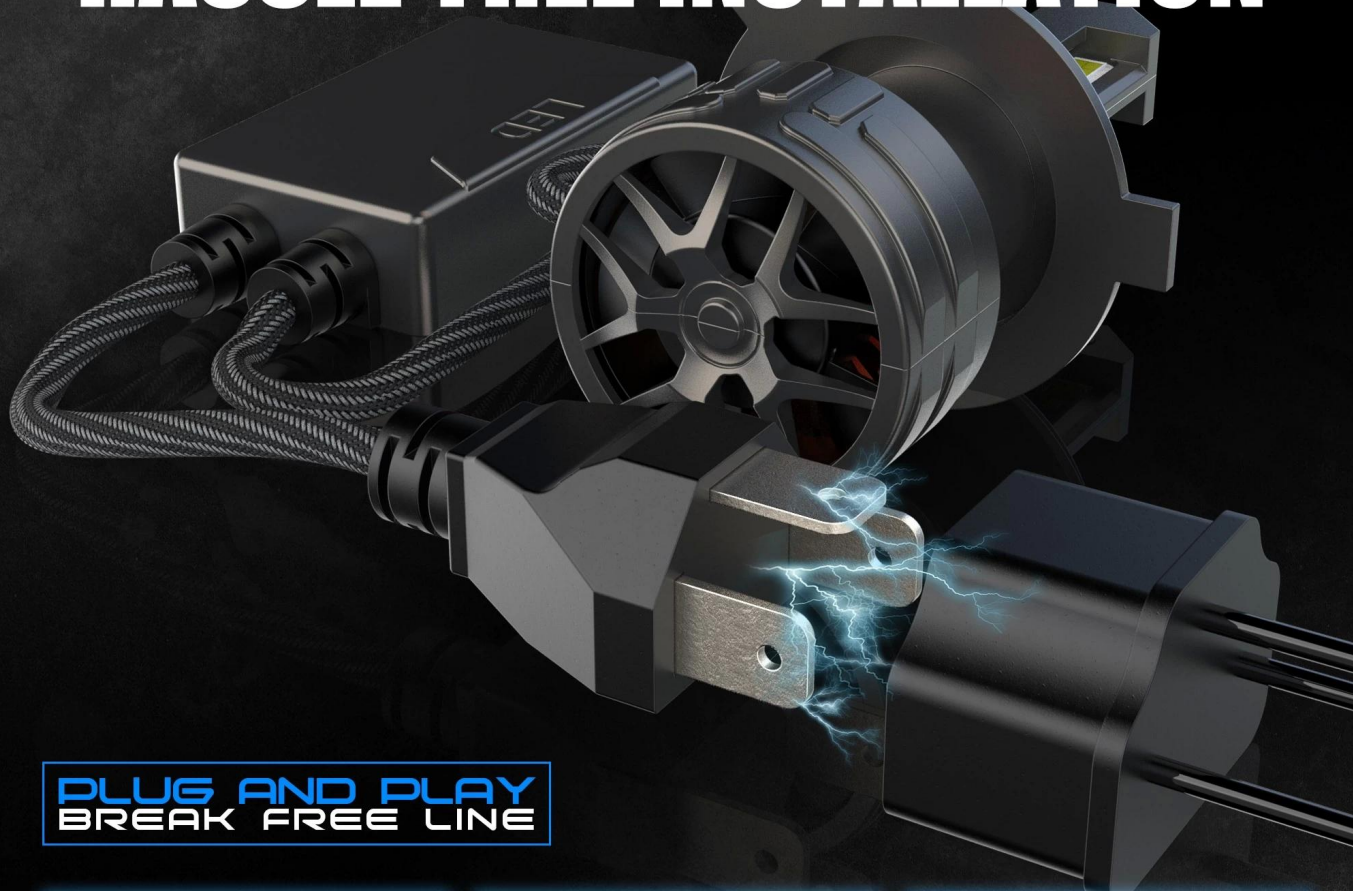


Noiseless turbofan

Copper fins for heat dissipation

Vacuum heat pipe

HASSLE-FREE INSTALLATION



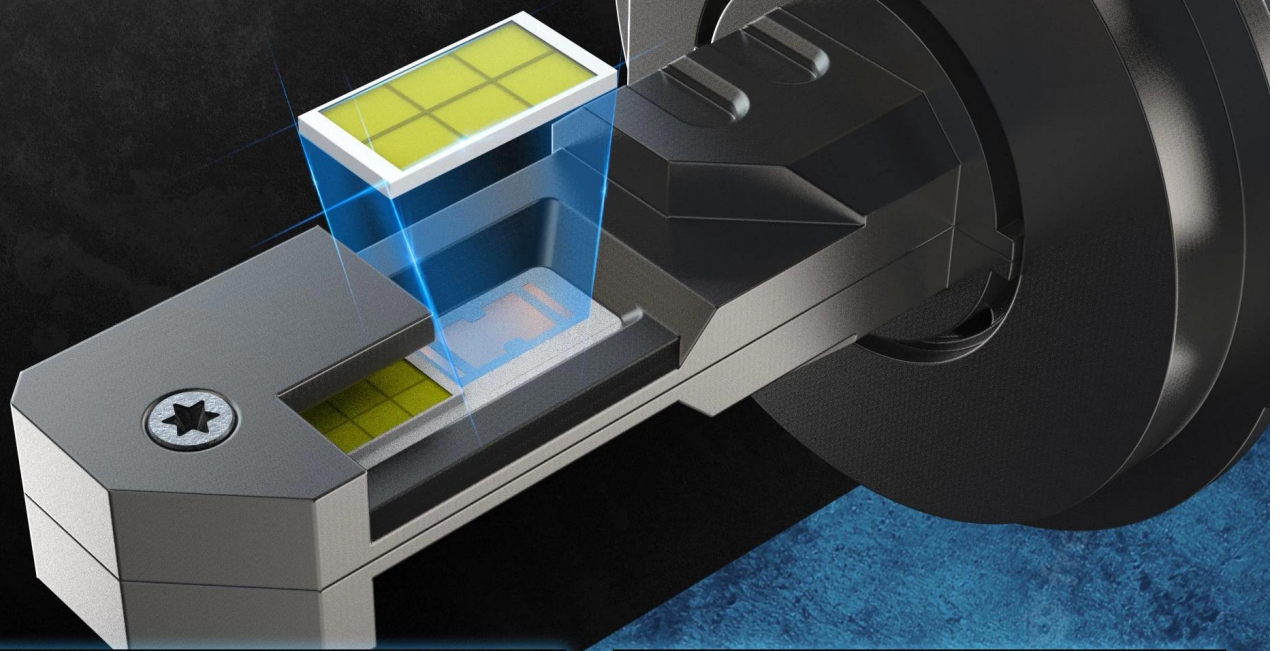
PLUG AND PLAY
BREAK FREE LINE



UPDATE VERSION

BRIGHTNESS BOOST 150%

COMPARED WITH THE ORIGINAL CAR XENON LAMP



▶ Low beam



▶ High beam